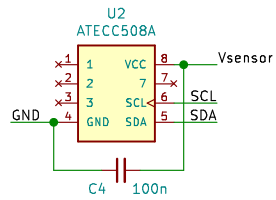
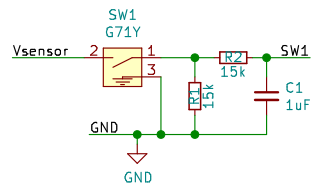


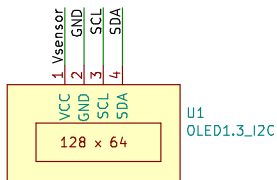
I2C crypto flash



User push button



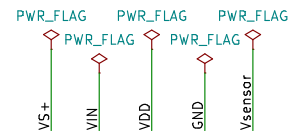
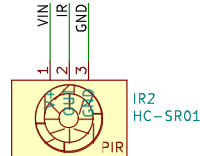
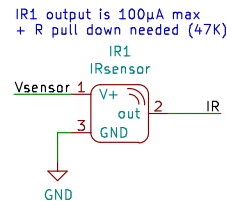
Display



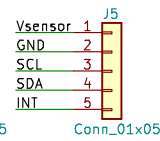
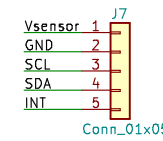
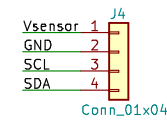
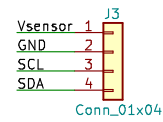
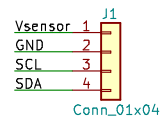
PIR sensors

either IR1 or IR2 (both is not allowed)

HC-SR01 V+ accepts from 5 to 20v
OUT pin is 3.3 TTL

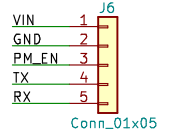


I2C sensors connectors

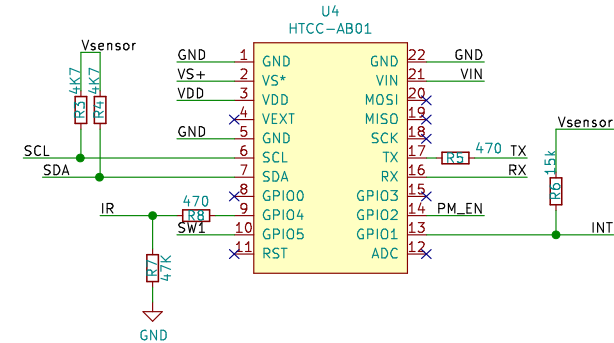


Serial sensors connector

Notes about Particle Meters sensors
- PM_EN is optionally intended to enable/disable the particle meter (not to have it always on)

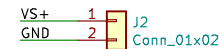


Notes:
- ADC must be left floating to enable VBat reading (onboard BR1 not removed)
- Panasonic IR sensor delivers upto 100µA, hence 47K

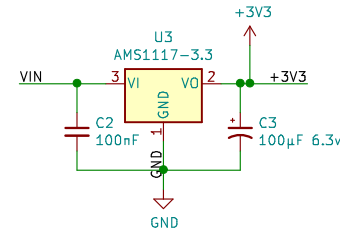


Power supply

Solar panel

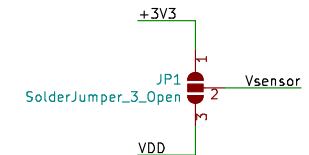


USB power



Sensors power supply selector

USB powered: junction 1-2
Solar powered: junction 2-3 (AMS1117 not needed)



Board mounting holes

